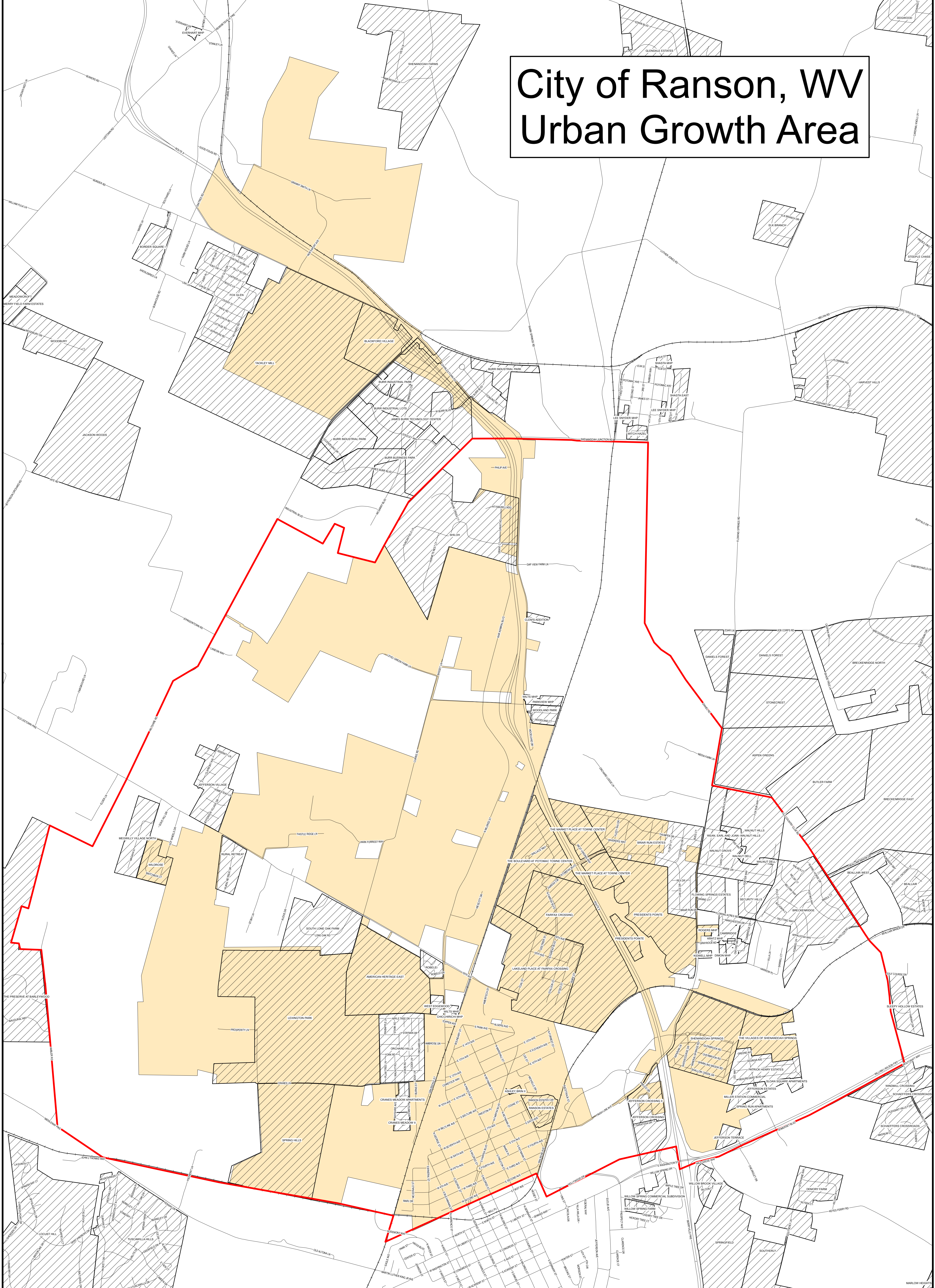
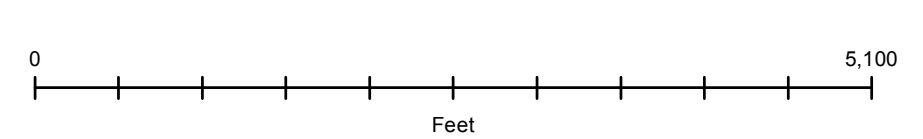
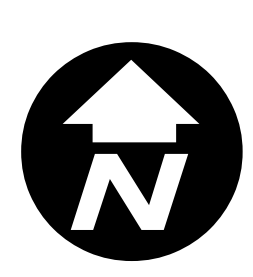
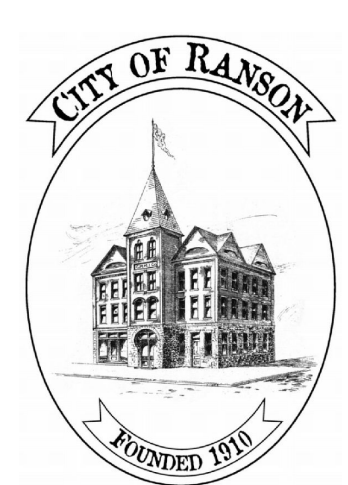


# City of Ranson, WV Urban Growth Area



**NOTES:**  
 Revised: February 19, 2015  
 Every effort has been made to ensure the accuracy of this data. This data is provided without warranty of any kind, either expressed or implied, including, but not limited to, the implied warranties of merchantability and fitness for particular service. Reliance on this data is at the risk of the user. In no event will the City of Ranson be liable for any damages, including loss of data, financial loss, business interruption, loss of business information or other pecuniary loss that might arise from the use of the map or the information it contains. Information contained in this map is not to be construed or used as a "legal description" or a tax assessment map". The boundaries here in illustrated are in approximate locations. Map information is believed to be generally accurate but complete accuracy is not guaranteed or implied. Any errors or omissions should be reported to the City of Ranson Department of Community Development. The official interpretation of the zoning district locations is the sole responsibility of the Zoning Administrator.



- Road
- +— Railroad
- City of Ranson's Urban Growth Boundary
- ▨ Subdivision
- City of Ranson Boundary